



312 Porchester Road, Nottingham, NG3 6GR

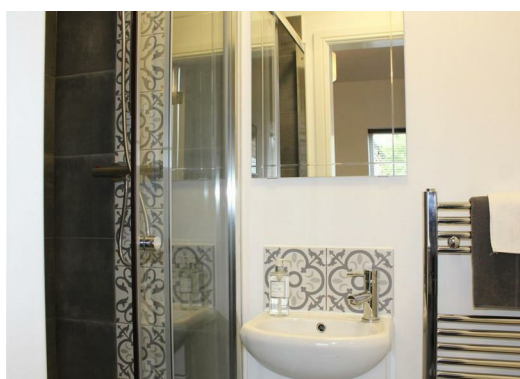
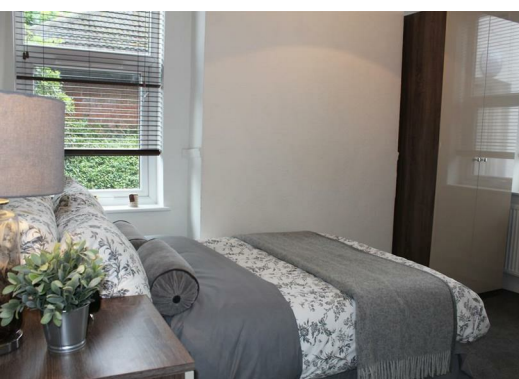
£550

 1  1  null  D

Double room to rent in a large Victorian shared house on Porchester Road, Mapperley.

This room is on the ground floor and is furnished with a double bed, wardrobe & drawers. It also has an en suite shower room. There is shared use of the large kitchen/diner and utility bills are included in the rent

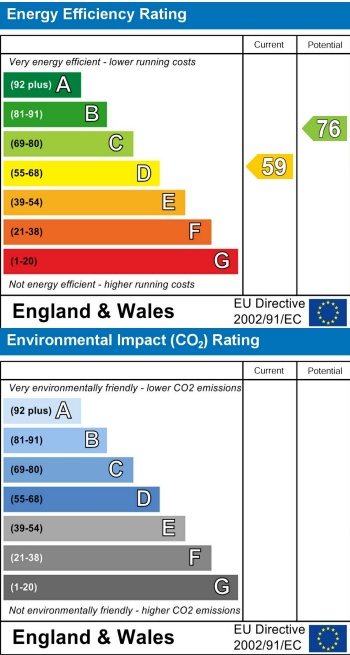
The property is close to many amenities and has good transport links to the city centre.



ENTRANCE HALLWAY
26' 1" x 5' 6" (7.96m x 1.69m)

KITCHEN/DINER
18' 2" x 10' 11" (5.56m x 3.35m)

REAR GARDEN



These particulars, whilst believed to be accurate are set out as a general outline only for guidance and do not constitute any part of an offer or contract. Intending purchasers should not rely on them as statements of representation of fact, but must satisfy themselves by inspection or otherwise as to their accuracy. No person in this firms employment has the authority to make or give any representation or warranty in respect of the property.